


# Using Forms

# 2

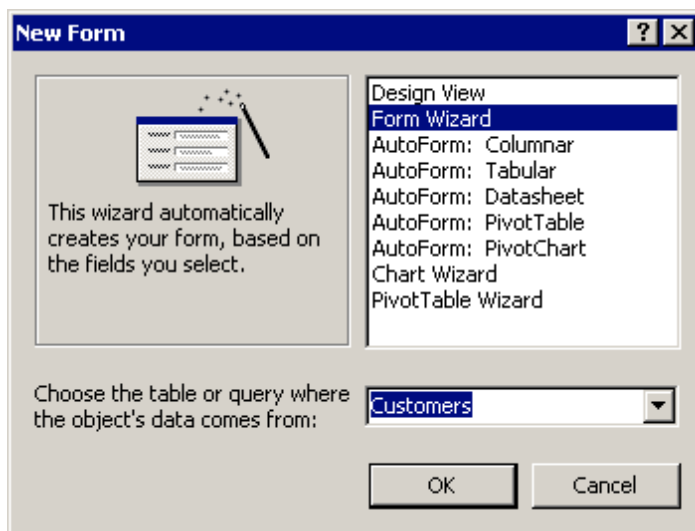
You made a simple form in the last chapter using **AutoForm**. Let's look at forms in a bit more detail:

## Using Form Wizard to create a form


AutoForm is by far the easiest way to create a simple form. You created a **Columnar AutoForm** in the last chapter. Let's create a few different forms using the **Form Wizard** now to display your customer data:

- Click the **Forms** button  on the **Database Window**
- Click the **New** button

**Exercise**  
*Creating a Form  
using Form  
Wizards*



- Select the **Form Wizard** option
- Select the **Customers** table from the **Choose the table or query...** pull-down list

- Click the **OK** button
- Click the **Select All** button 
- Click the **Next>** button
- Select **Tabular**. Click **Next>**
- Select **Standard**. Click **Next>**
- Name your form **Customers2**
- Click the **Finish** button